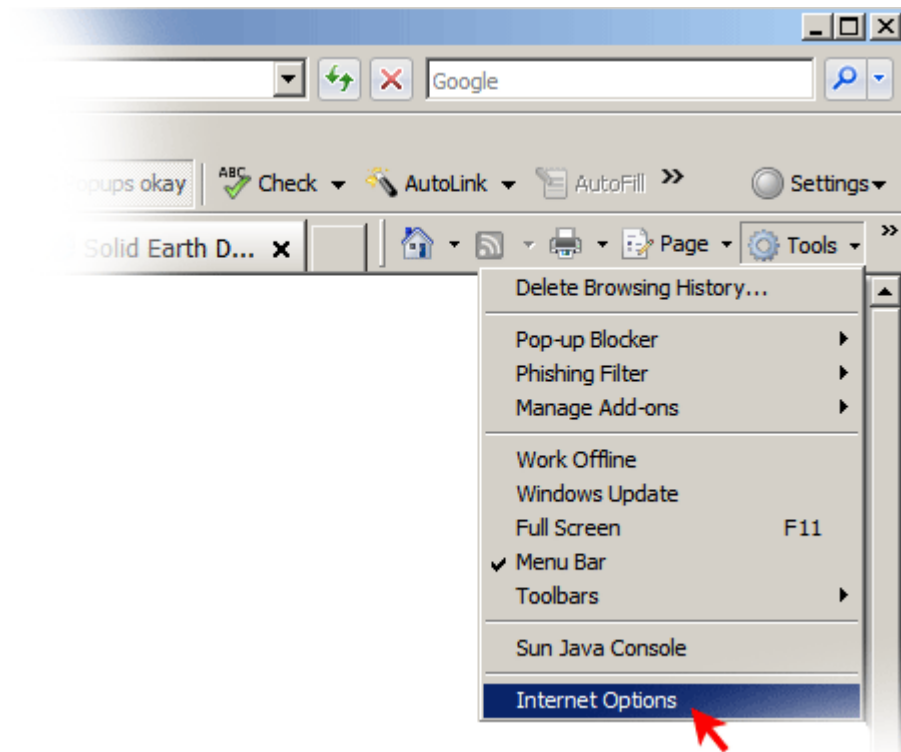


Getting Started

- ! LIST-IT is designed to operate optimally with the default installation settings of most web browsers, but some settings may require optimization. If changes have been made however, they can cause the MLS to operate unpredictably. Solid Earth has provided a few instructions to help you setup your web browser.

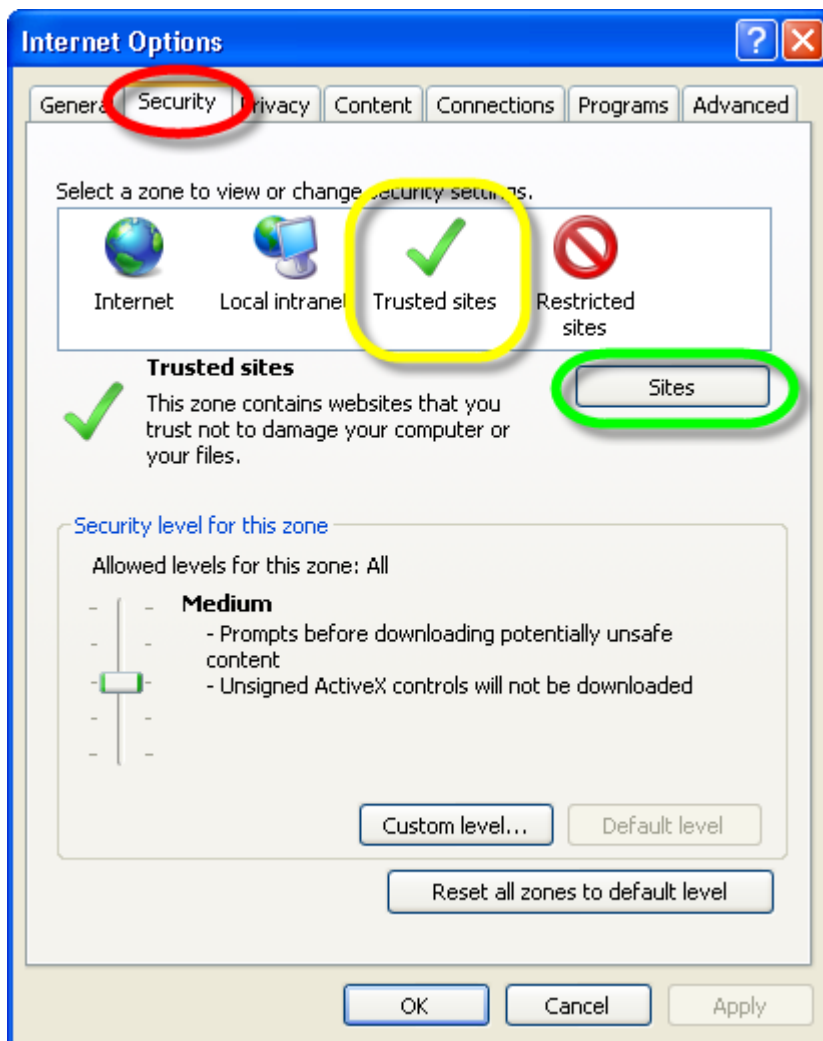
Step One

- i Open Internet Explorer and select the Tools pull down menu and choose Internet Options:



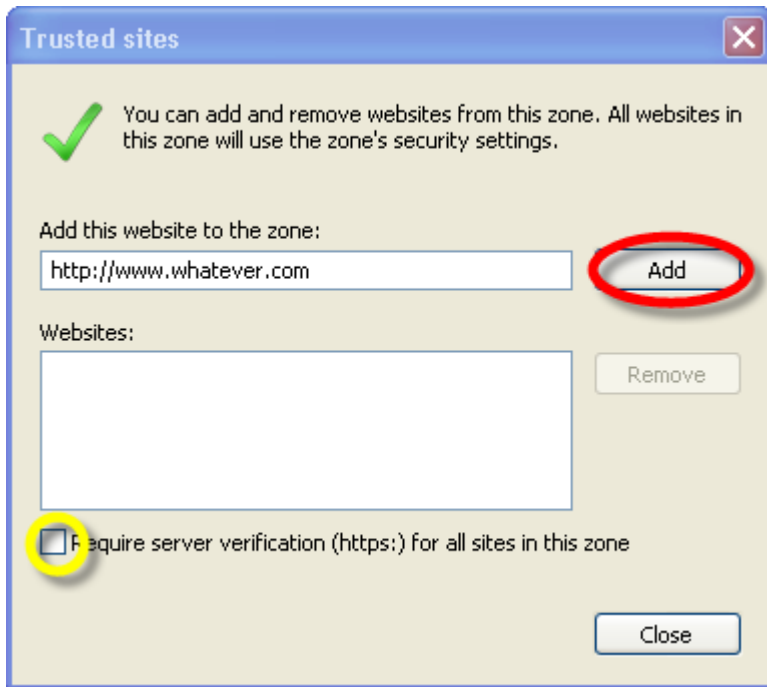
Step Two

- i Click the SECURITY TAB and you'll see a window identical to the one below. Click the button labeled "Trusted Sites", then click the "Sites" button (we've circled these buttons so you'll find them easily).



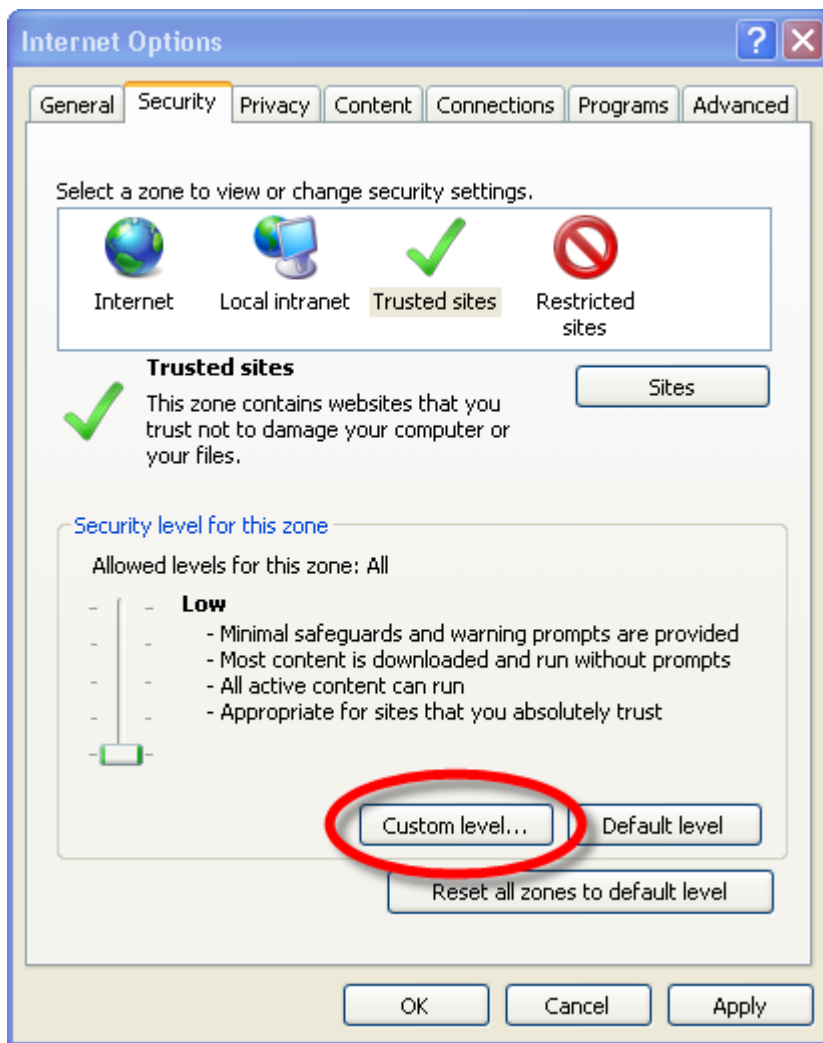
Step Three

- i** Once you click the "Sites" button, you'll see a window identical to the one below. In the field just below the words, "Add this web site...", type in the COMPLETE ADDRESS of your MLS web site. This must include the http://www... information (http://www.whatever.com, for example).
- i** Once you typed in that address, make sure the check box (circled in yellow) is UNCHECKED, then click the ADD button (circled in red). Now click OK to return to the Internet Options window.



Step Four

- i** After adding the address for the Trusted Site you need to reduce the security for the Trusted Site Zone. From this screen click the "Custom Level" button (the green trusted sites option must be selected).



i On the Security Settings window find the option to reset the security, change this to "Low" and click the "Reset" button. Then click OK and OK again to return to your normal browser window.

