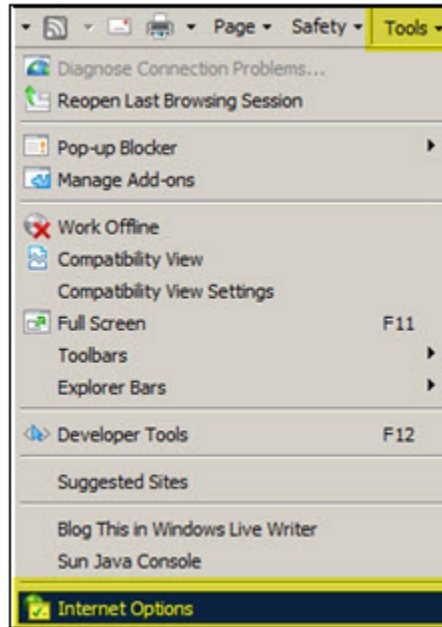
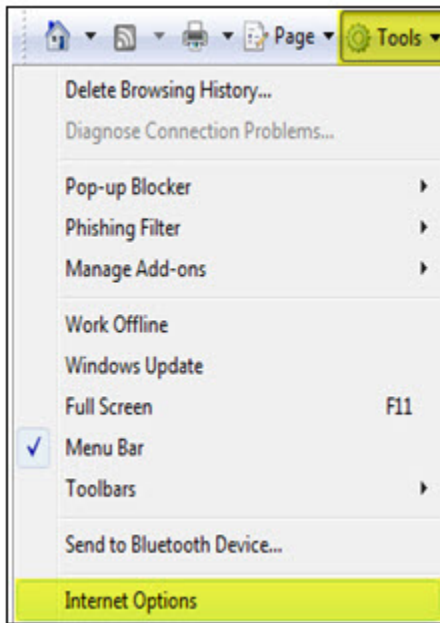
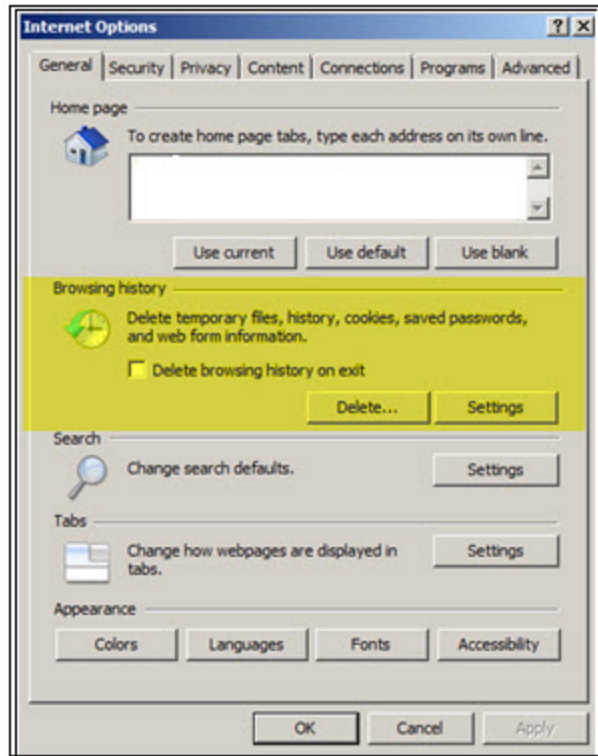
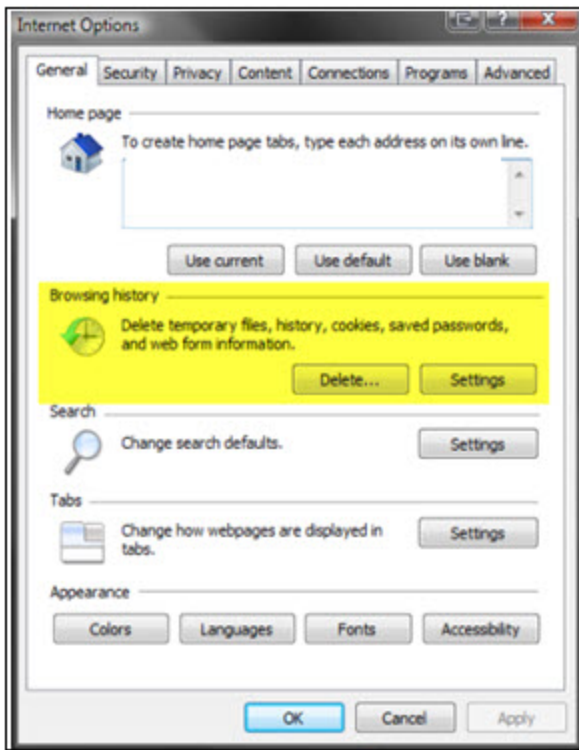


Getting Started

LIST-IT is designed to operate optimally with the default installation settings of most web browsers, but some manual setting changes may be required. This document will walk you through those steps. Solid Earth recommends running the latest version of Internet Explorer. This document contains examples from both IE7 and IE8. Firefox is also an acceptable browser. Open Internet Explorer and, from the 'Tools' menu and click on 'Internet Options'. The left images are from IE 7 and the right from IE 8.

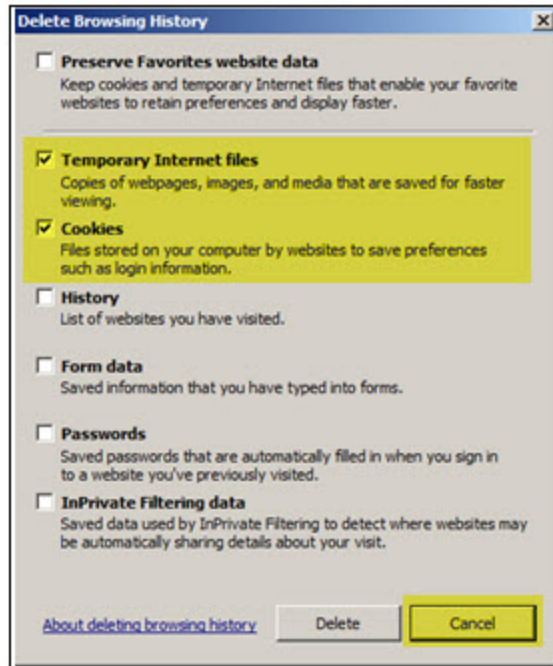
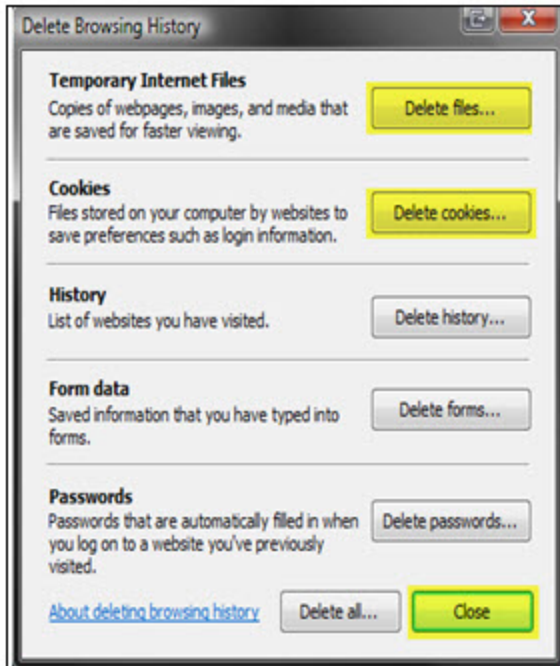


Selecting 'Internet Options' opens a new window with options to further edit your browser settings.



Deleting Temporary Internet Files and Cookies

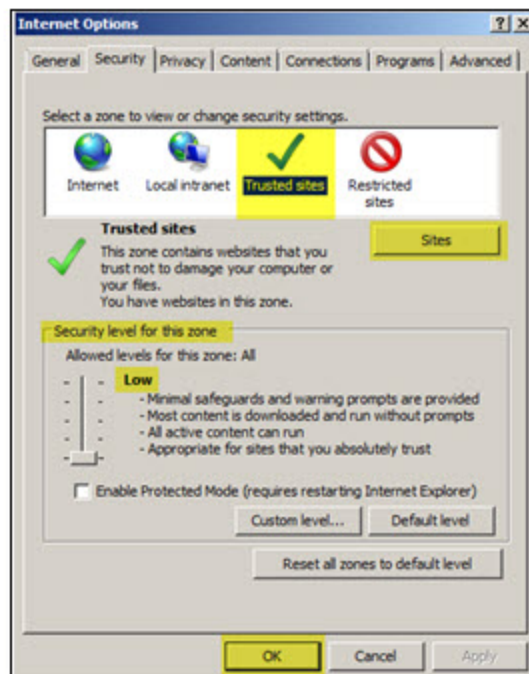
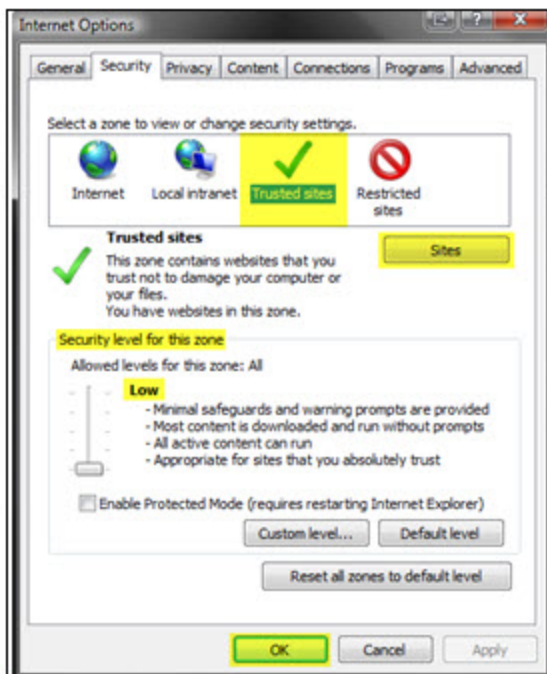
From the General tab, locate the "Delete..." button (highlighted in the image above) and click it. From here, choose the options to delete your temporary internet files and your cookies. The IE 7 example appears on the left and IE 8 on the right. This will delete all accumulated Internet files on your machine.



These files are unnecessary. This process is routine and an important part of keeping your system clean.

Changing Security Settings

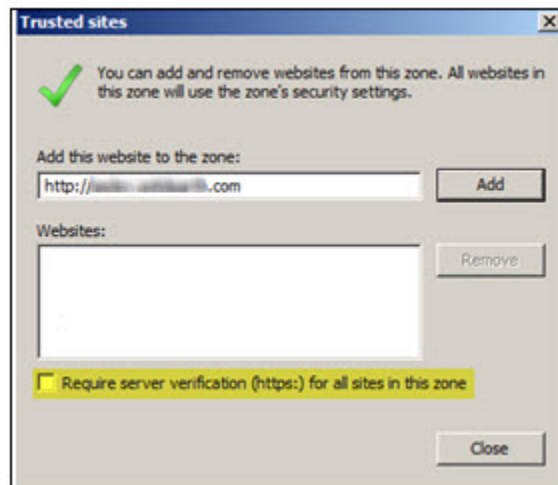
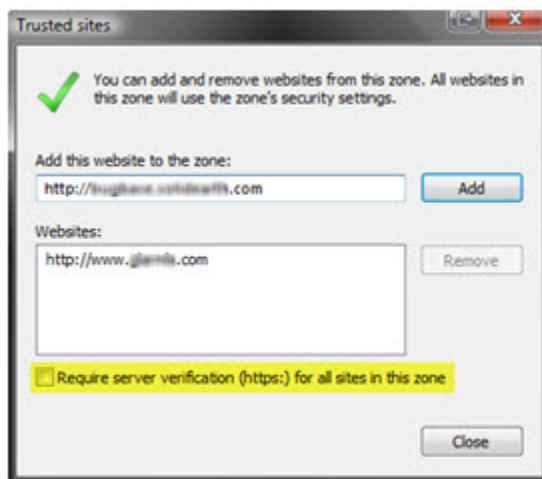
Next, click on the 'Security' tab and choose 'Trusted Sites' from the settings at the top. Then slide the 'Security Level for this Zone' bar to 'Low'.



From this same screen, click the 'Custom Level' button. At the bottom of the new window, reset the level to LOW, push the RESET button and click OK.

Adding the MLS as a Trusted Site

Next, click the 'Sites' button to open the following window. Now, you can add the main URL to access your MLS website in the 'Add this website to the zone' field. Include the 'http://' prior to entering the URL and click the 'Add' button. Make sure that the 'Require Server Verification (https:) for all Sites in this Zone' checkbox is left UNCHECKED. Then, close the box.



Restore Settings

Lastly, click the 'Advanced' tab. Click the 'Restore Advanced Settings' button. Click 'OK' to exit out of the open dialogs and then restart the Internet Explorer program.

